



## 13 Dymchurch Court Godinton Road

Ashford, TN23 1DY

Price £215,000

Well presented second floor apartment in the town centre. The spacious and pleasantly appointed accommodation comprises an open plan kitchen and living space with fitted appliances, two double bedrooms and bathroom. A balcony provides desirable outside space with the property also enjoying central heating, allocated parking and a lift to all floors.

### Viewing

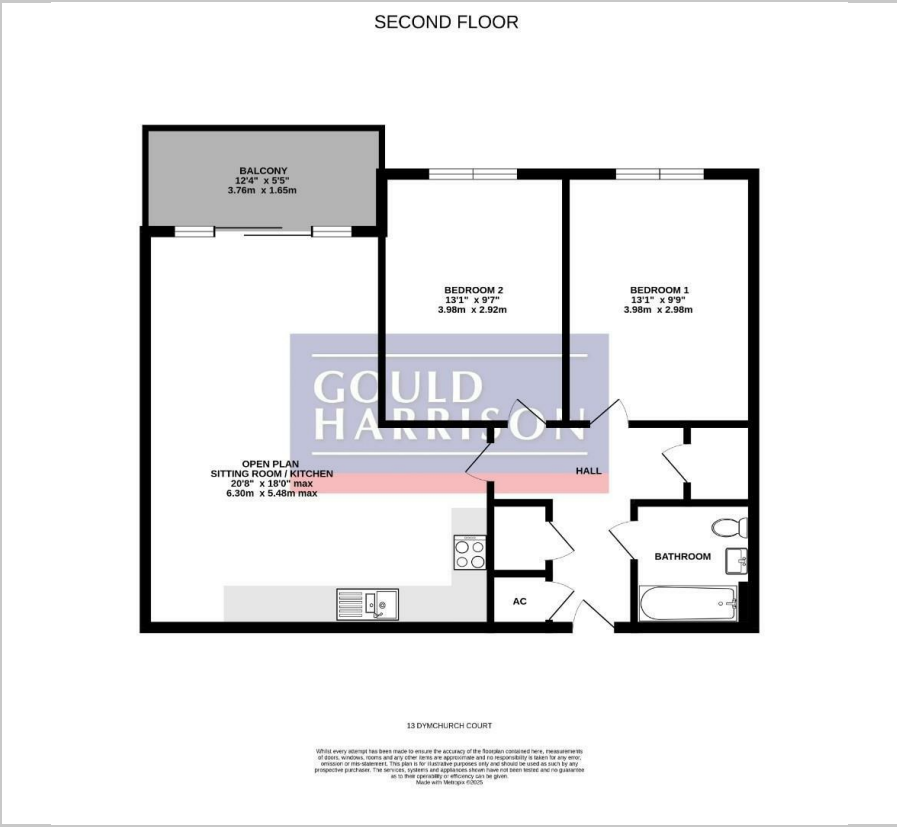
Please contact our Ashford Office on 01233 646411 if you wish to arrange a viewing appointment for this property or require further information.

- WELL PRESENTED SECOND FLOOR APARTMENT
- TWO DOUBLE BEDROOMS
- OPEN PLAN SITTING ROOM / KITCHEN
- PRIVATE BALCONY
- LIFTS TO ALL FLOORS
- ALLOCATED PARKING SPACE
- LEASEHOLD: 118 YEARS REMAINING
- TOWN CENTRE LOCATION





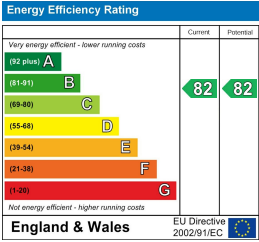
Floor Plan



Area Map



Energy Efficiency Graph



These particulars, whilst believed to be accurate are set out as a general outline only for guidance and do not constitute any part of an offer or contract. Intending purchasers should not rely on them as statements of representation of fact, but must satisfy themselves by inspection or otherwise as to their accuracy. No person in this firm's employment has the authority to make or give any representation or warranty in respect of the property.